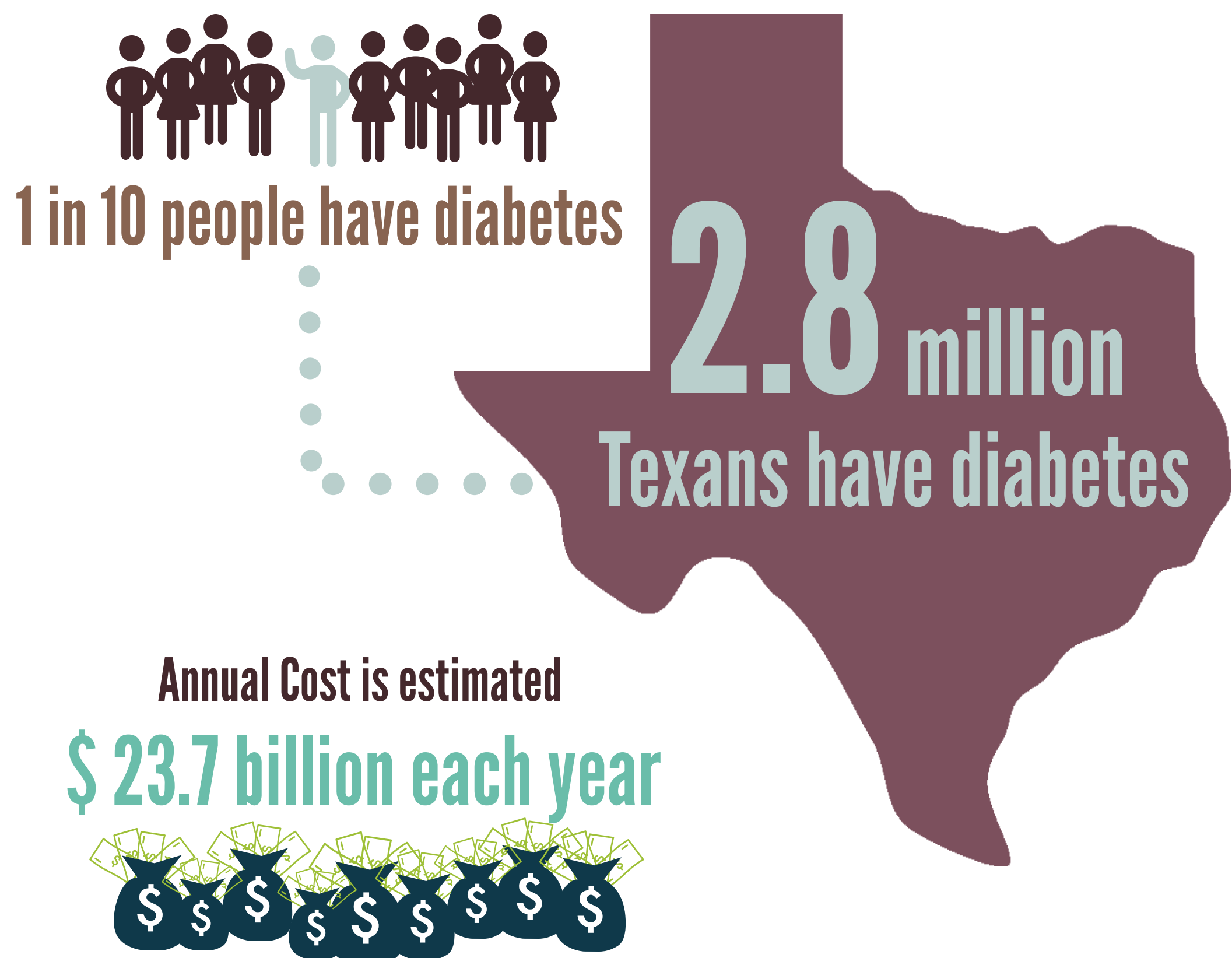
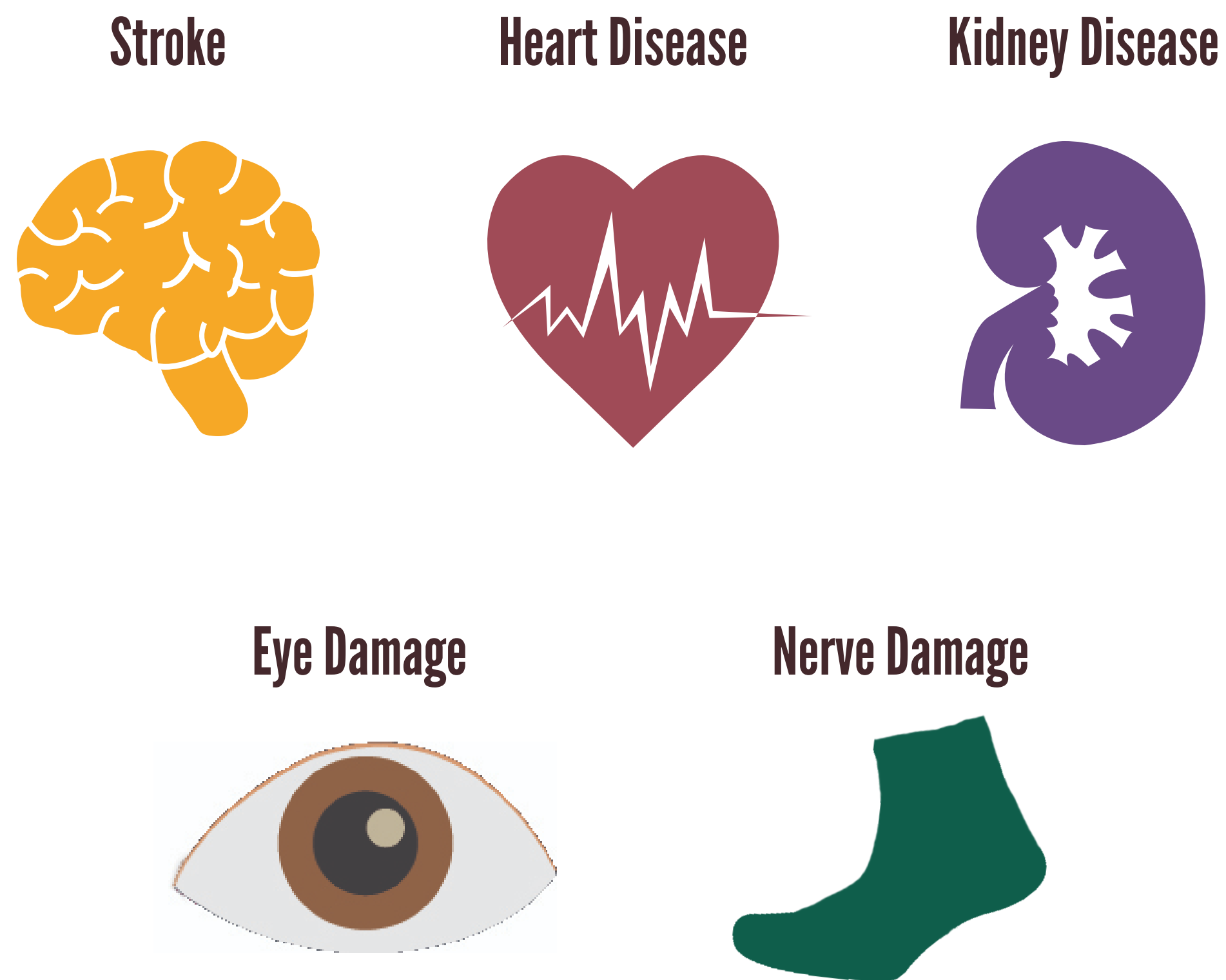


# Diabetes in Texas

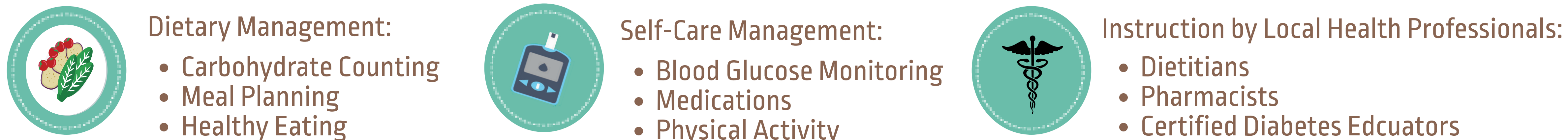
## The Cost of Diabetes



## Potential Consequences of Diabetes



## Texas A&M AgriLife Extension provides programs for people with type 2 diabetes through:



## 2017 Do Well, Be Well with Diabetes Program Impacts

**32 COUNTIES**



**589** people with diabetes registered for the class

**350** people had never taken a diabetes class before

2017 potential health-care cost savings resulting from improved management of diabetes is estimated at:

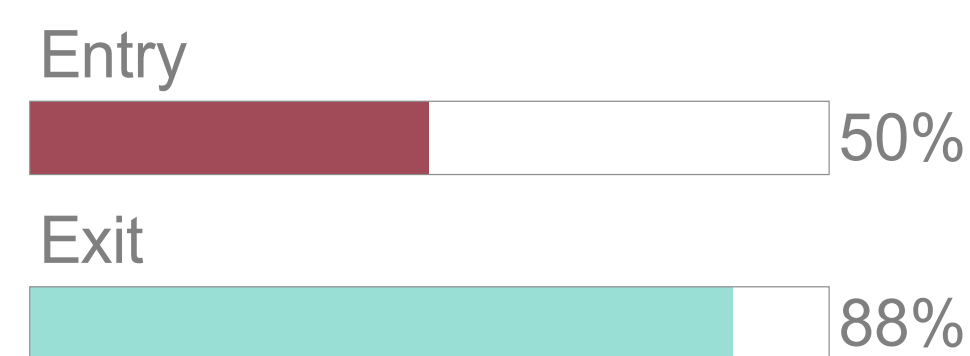
**\$37 million**

Self-reported Average A1C after attending classes

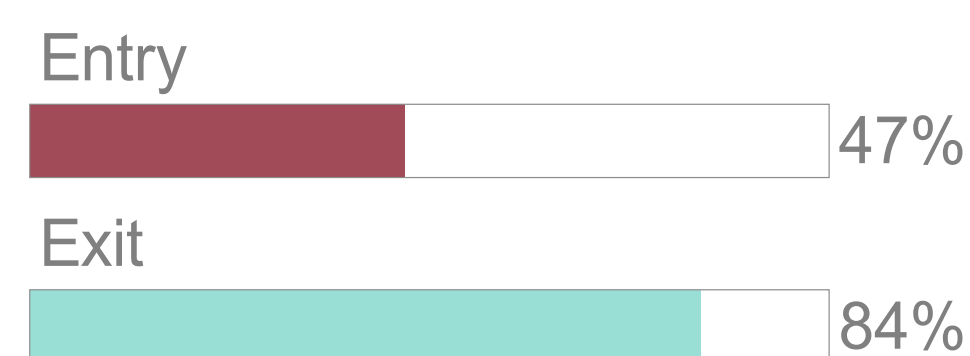
**6.7%**

## Overall Impacts

Percent of participants who know how to manage blood glucose through dietary management



Percent of participants who feel confident in their ability to control their diabetes



**97%**

participants rated the classes as good or excellent